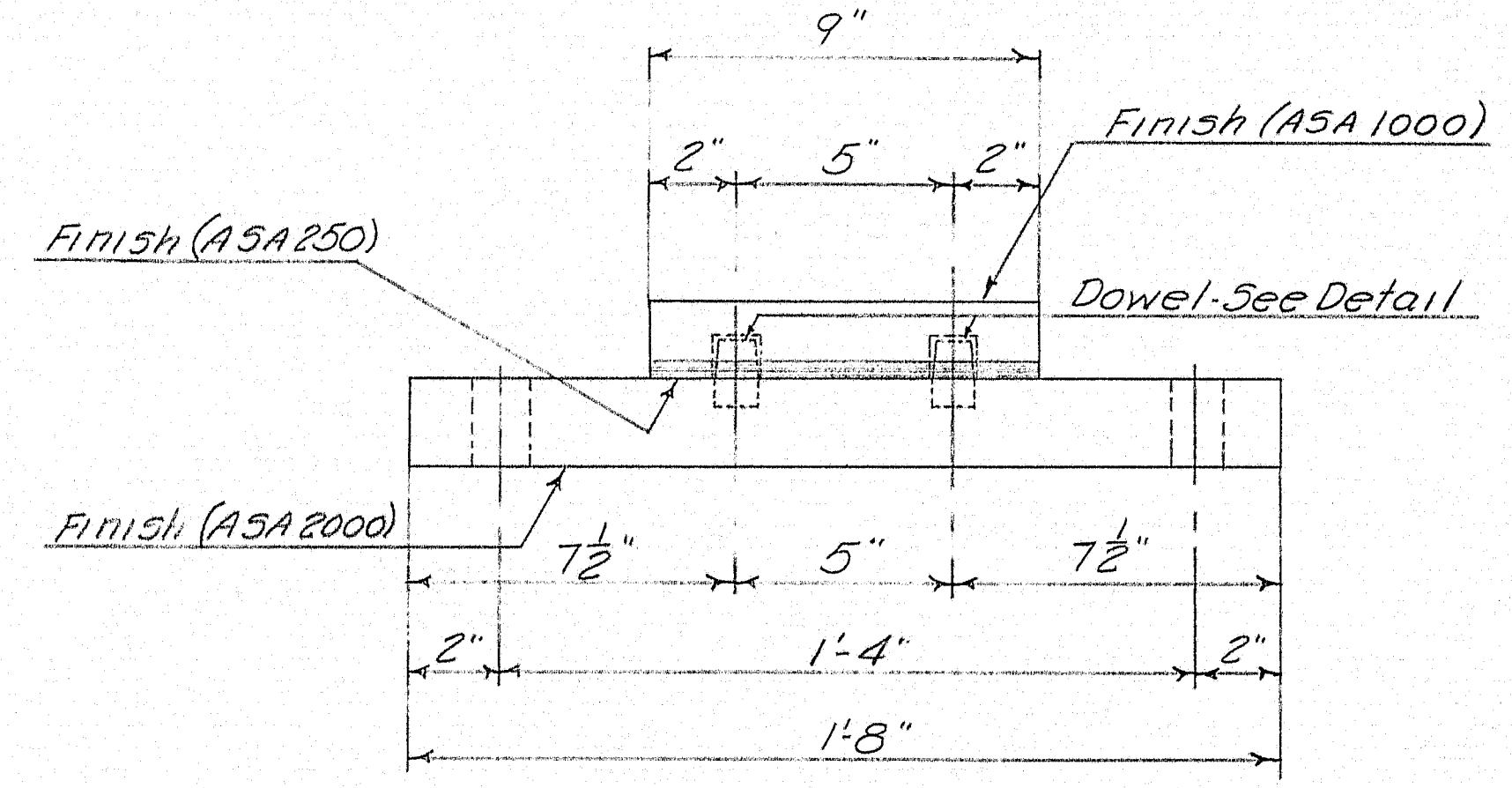
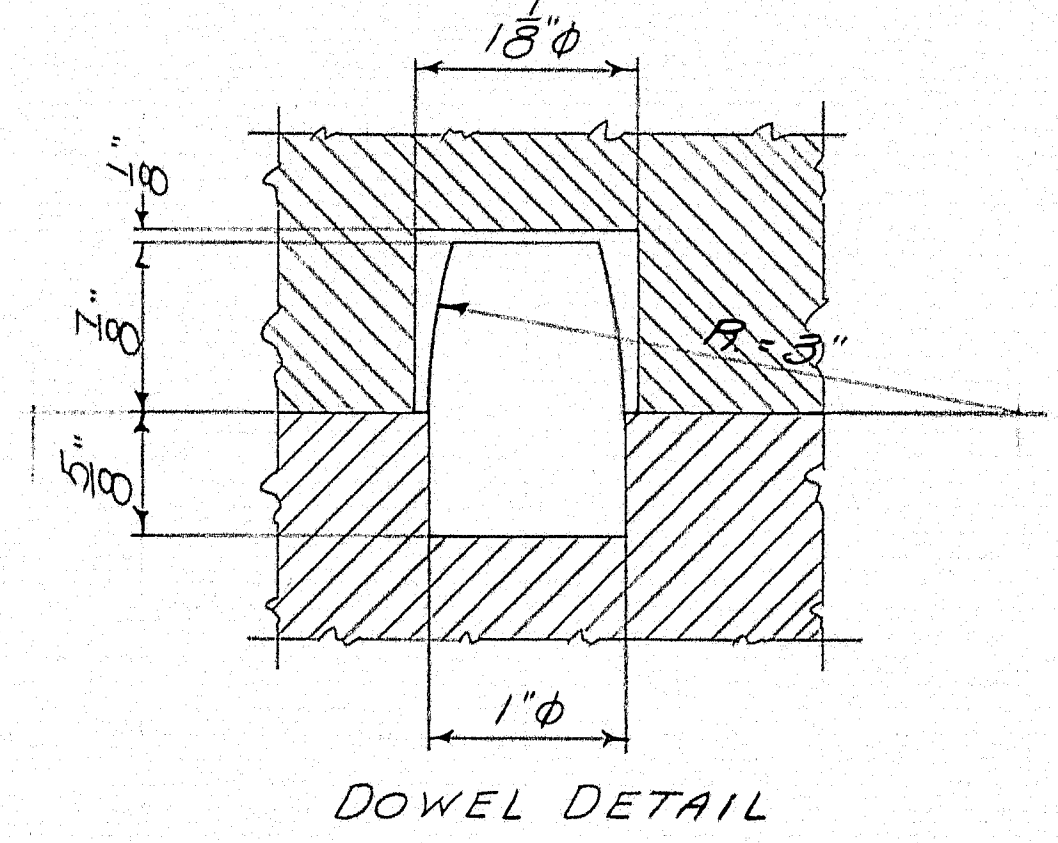
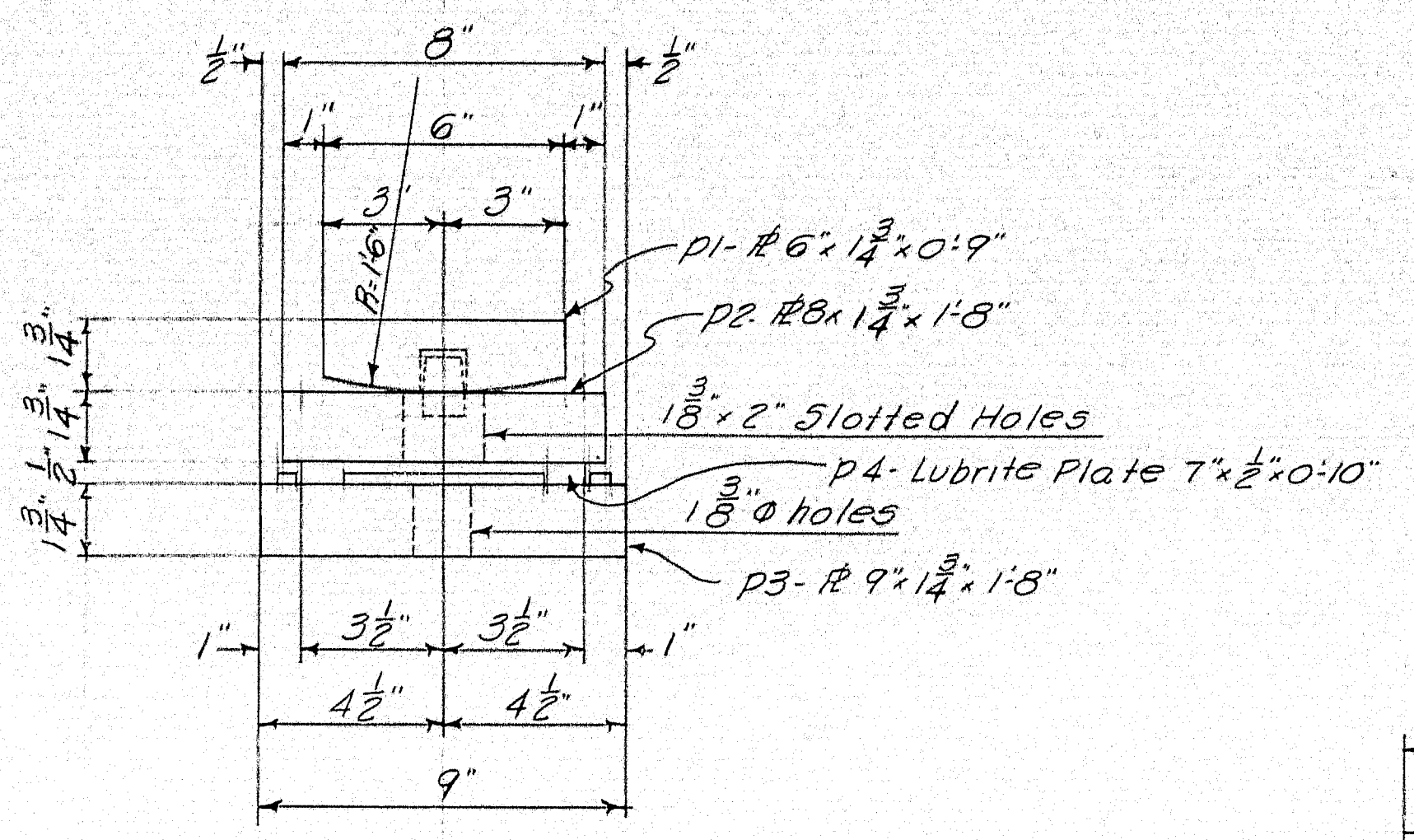


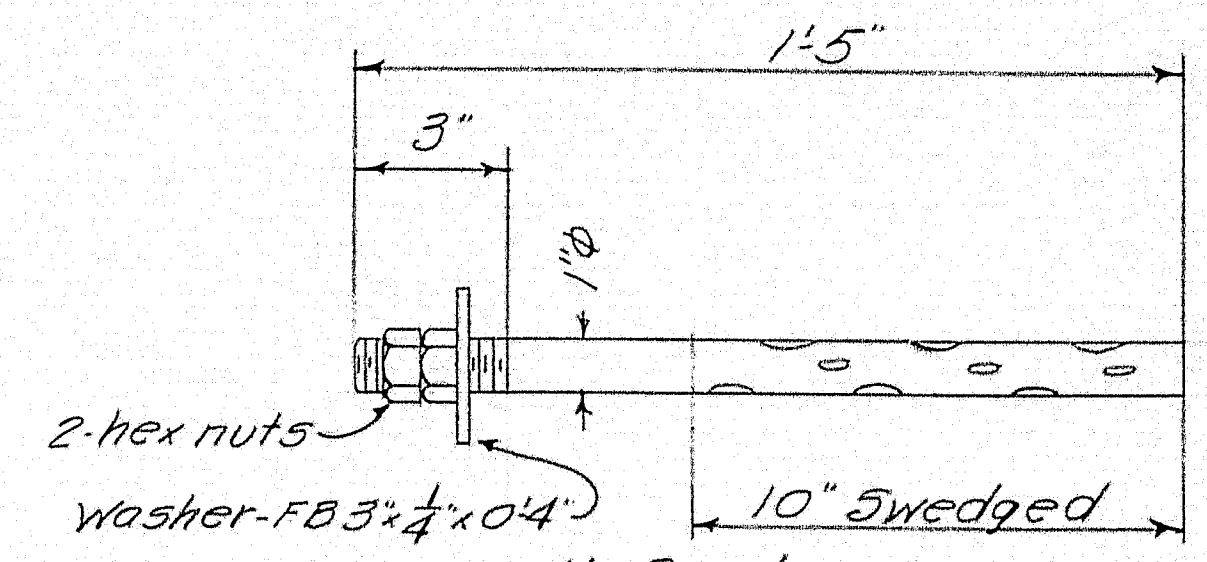
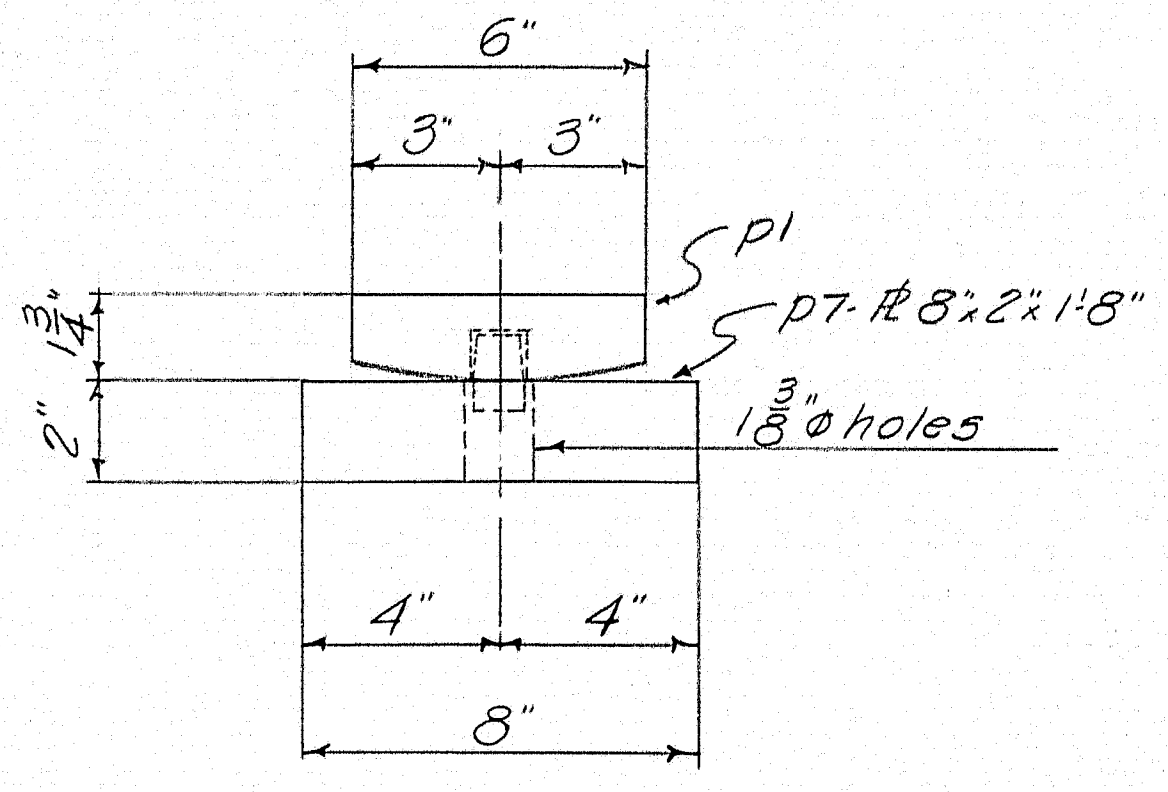
EXPANSION BEARING
12 Req'd - Pier 1
24 Req'd - Pier 2



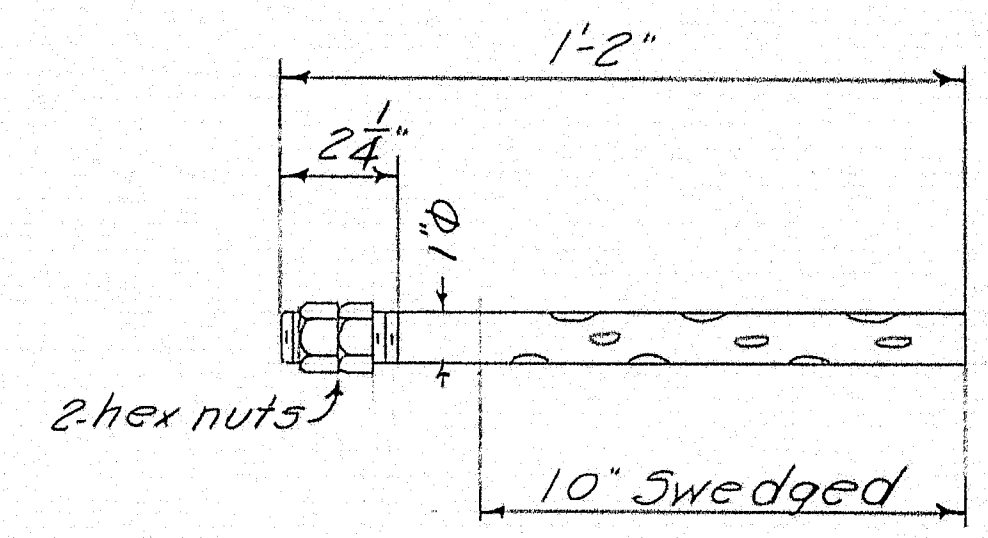
FIXED BEARING
12 Req'd - Abut. 1
12 Req'd - Pier 1
12 Req'd - Abut. 2



DOWEL DETAIL



ANCHOR BOLT FOR EXPANSION BEARINGS
AB1- 72 Req'd



ANCHOR BOLT FOR FIXED BEARINGS
AB2- 72 Req'd

NOTES:-
No paint on top of p1's
No paint on Lubrite Plate
No paint on surfaces in contact with Lubrite Plate.
Coat finish surfaces ASA 250 with white lead & tallow except at contact surface with Lubrite Plate.

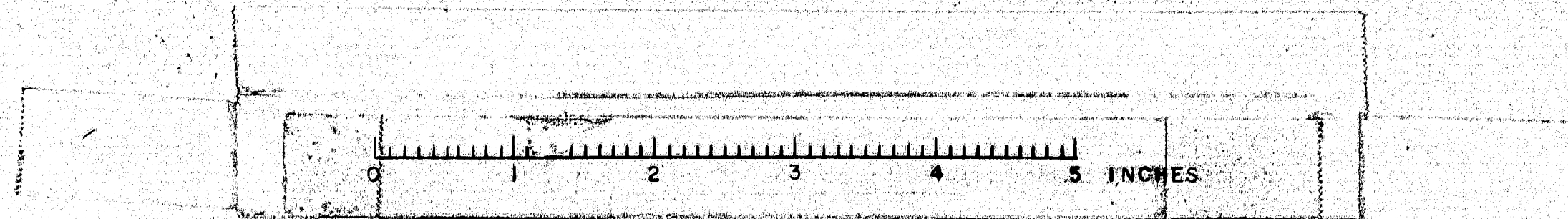
SHIP		BILL OF MATERIAL				DWG. NO. 8-165-51
MARK	NO.	MARK	SHAPE	LENGTH	WT.	REMARKS
36						
36						
72	P1		#6 x 1 1/4"	0	9	
36	P2		#8 x 1 1/4"	1	8	
36	P3		#9 x 1 1/4"	1	8	
36	P7		#8 x 2"	1	8	
72	P5		FB 3/4 x 1/4	0	8	
72	P6		do	0	5	
144	dowel		1" dia bar	0	1 1/2	
AB1	72		do	1	5	5wedge
AB2	72		do	1	2	do
288			1" hex nut			
72	washer		FB 3/4 x 1/4	0	4	
36	P4		#7 x 1/2"	0	10	Lubrite Bronze
Scale weigh all material						

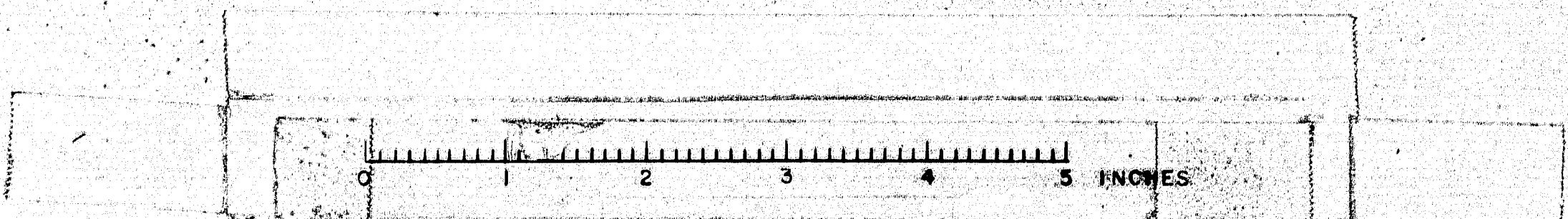
SHOP CONNECTIONS: Welded
FIELD CONNECTIONS: Welded
HOLES: As Noted
PAINT: Red Lead per M.S.H.C. Specs unless noted

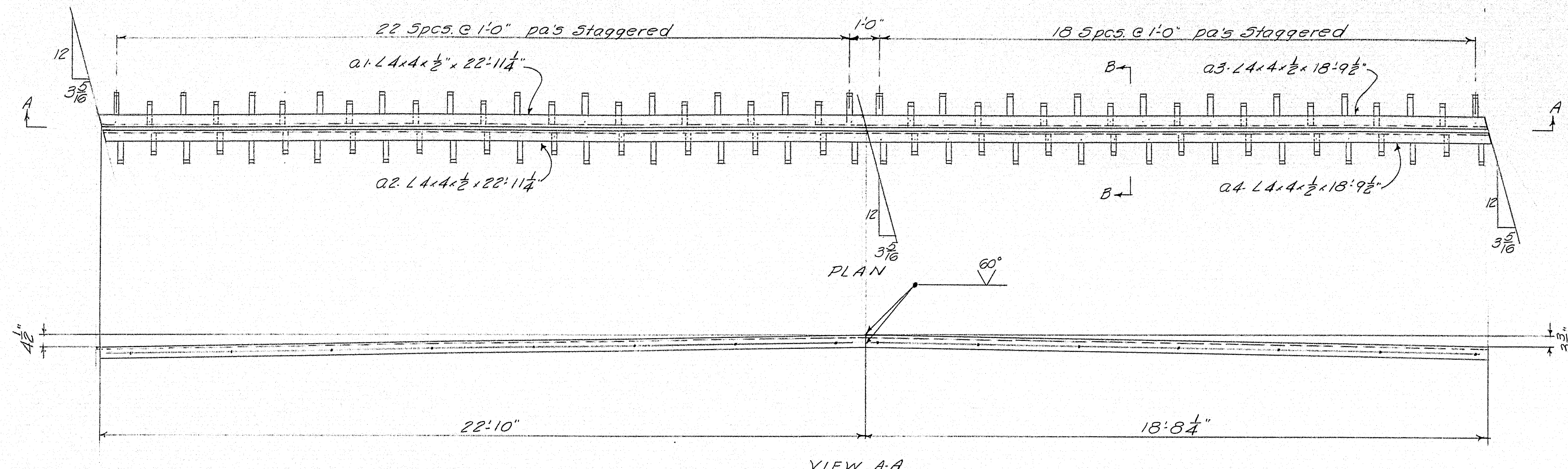
BRIDGE BEARINGS
Bancroft & Martin Rolling Mills Company
South Portland 7, Maine
NEW BELGRADE ROAD BRIDGE
AUGUSTA, ME.
CUSTOMER: WYMAN & SIMPSON
DESIGNER: M.S.H.C.
ORDER NO. _____ DWG. NO. 8-165-51

DRAWN	6-13-58 RLF
REVISION	
REVISION	
REVISION	

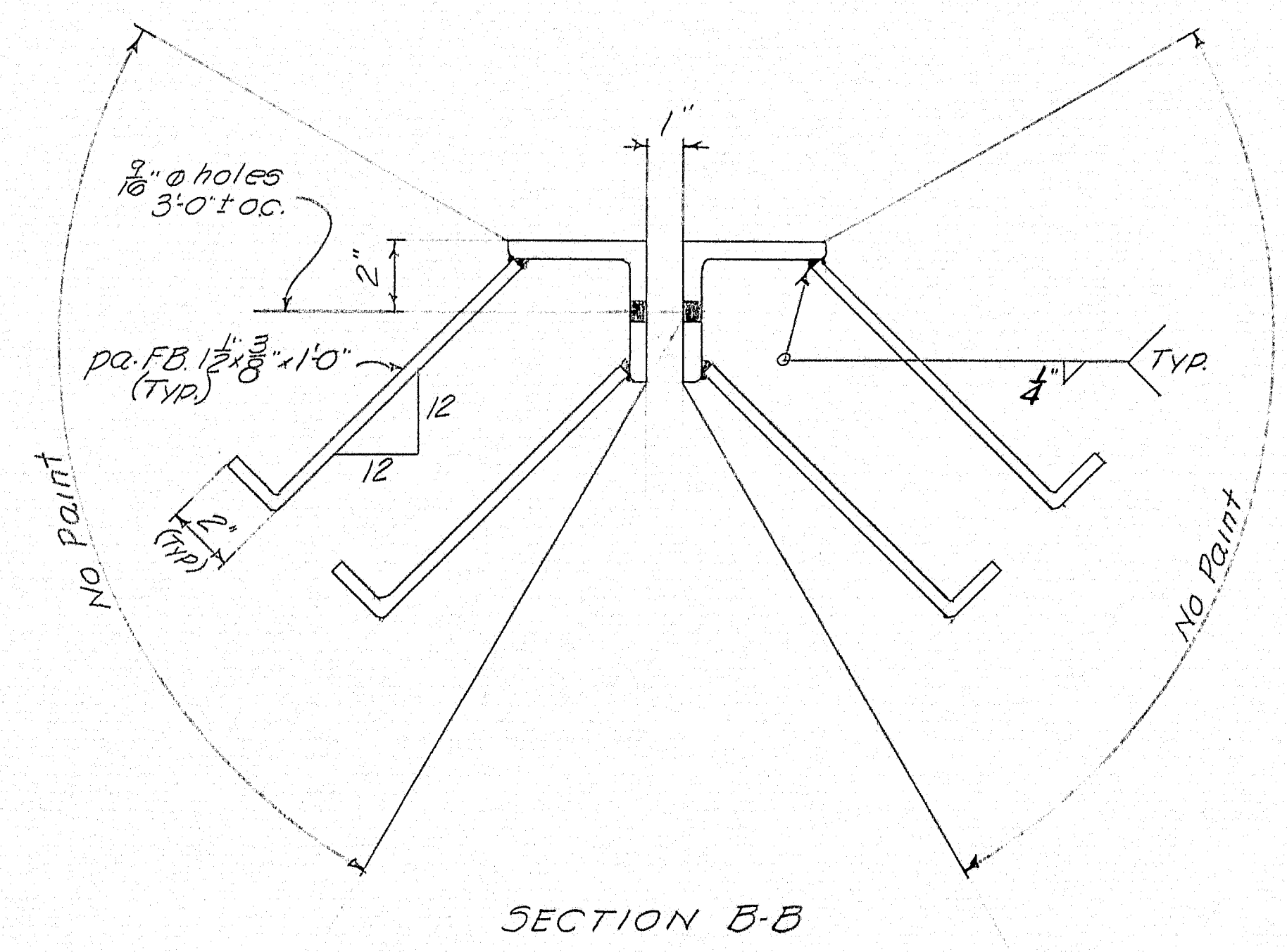
APR 6-19-58



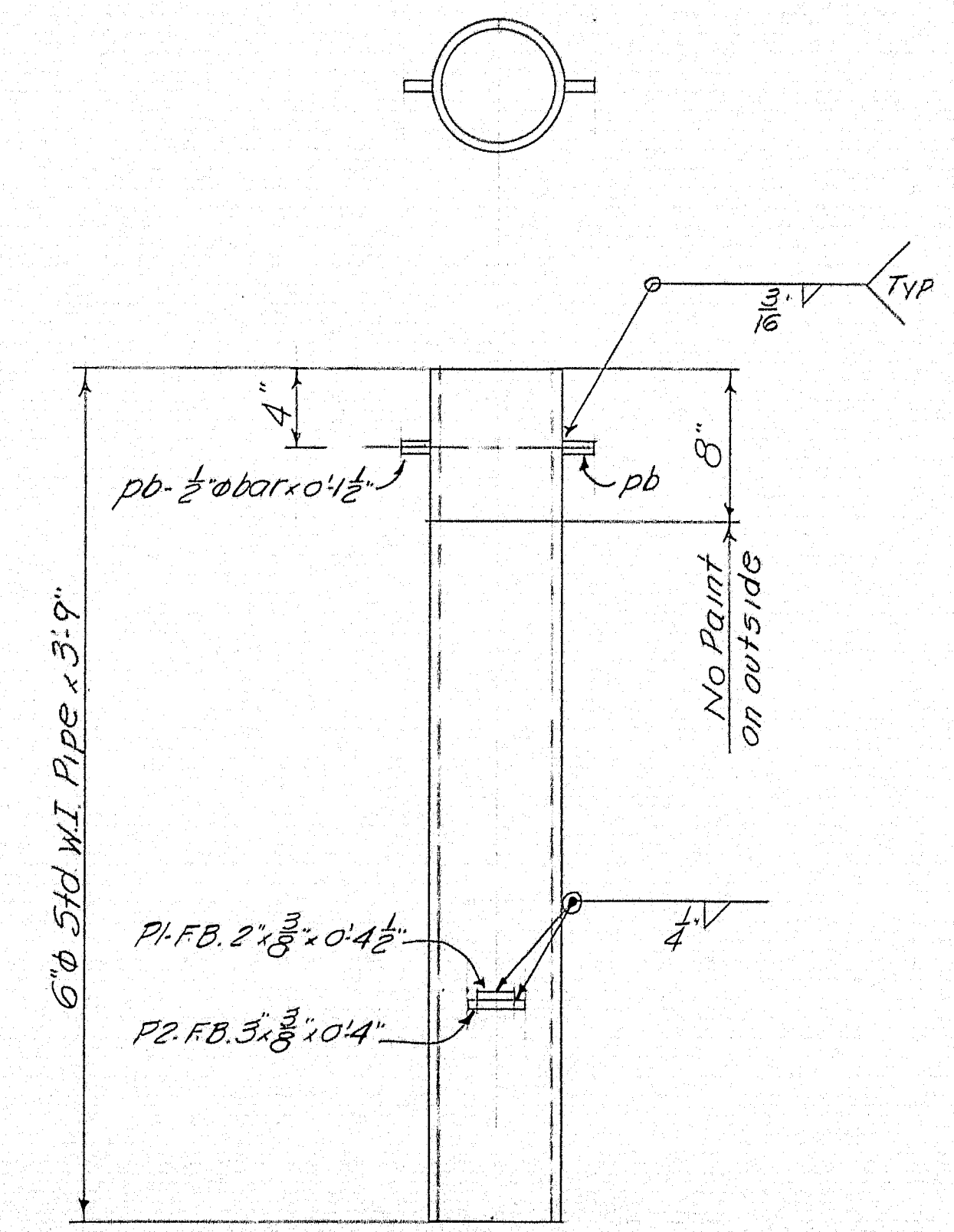




VIEW A-A
ARMORED JOINT
C Piers 1 & 2
4 Req'd



SECTION B-B



DRAIN
24 Req'd

SHIP		BILL OF MATERIAL				DWG. NO. 8-165-53	
MARK	NO.	MARK	SHAPE	LENGTH	WT.	WT. DEDUCTION	REMARKS
ARMORED JOINT	4		Shop Assembly	-			
	4	A1	14x4x1/2	22' 11 1/4"	4		
	4	A2	do	22' 11 1/4"	4		
	4	A3	do	18' 9 1/2"	4		
	4	A4	do	18' 9 1/2"	4		
	336	pa	FB 1 1/2 x 3/8	1' 0"			
DRAIN	24		60 STD WL PIPE	3' 9"			
	48	pb	2" x 3/8 bar	0' 1 1/2"			
P1	24		FB 2" x 3/8	0' 4 1/2"			
P2	24		FB 3" x 3/8	0' 4"			
	1		# fillet weld	42' 0"	5		

SHOP CONNECTIONS: Welded
FIELD CONNECTIONS: Welded
HOLES: As Noted
PAINT: Red Lead per M.S.H.C. Specs. unless noted

ARMORED JOINT & DRAIN
Bancroft & Martin Rollings Mills Company
South Portland, Maine
NEW BELGRADE ROAD BRIDGE
AUGUSTA, ME.
CUSTOMER: WYMAN & SIMPSON
DESIGNER: M.S.H.C.
ORDER NO. _____ DWG. NO. 8-165-53

DRAWN	6-14-58	P.L.F.
REVISION		
REVISION		
REVISION		

